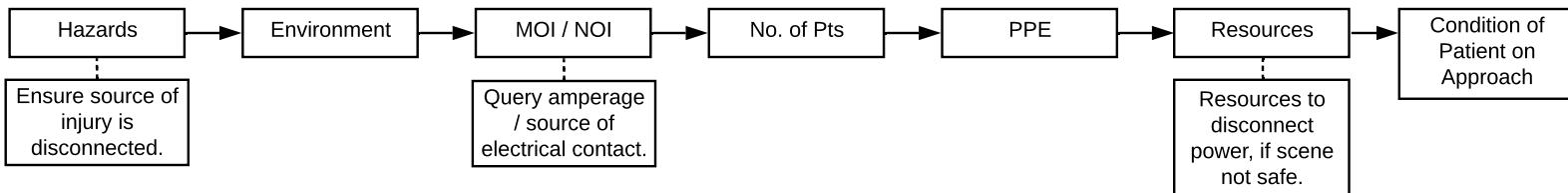
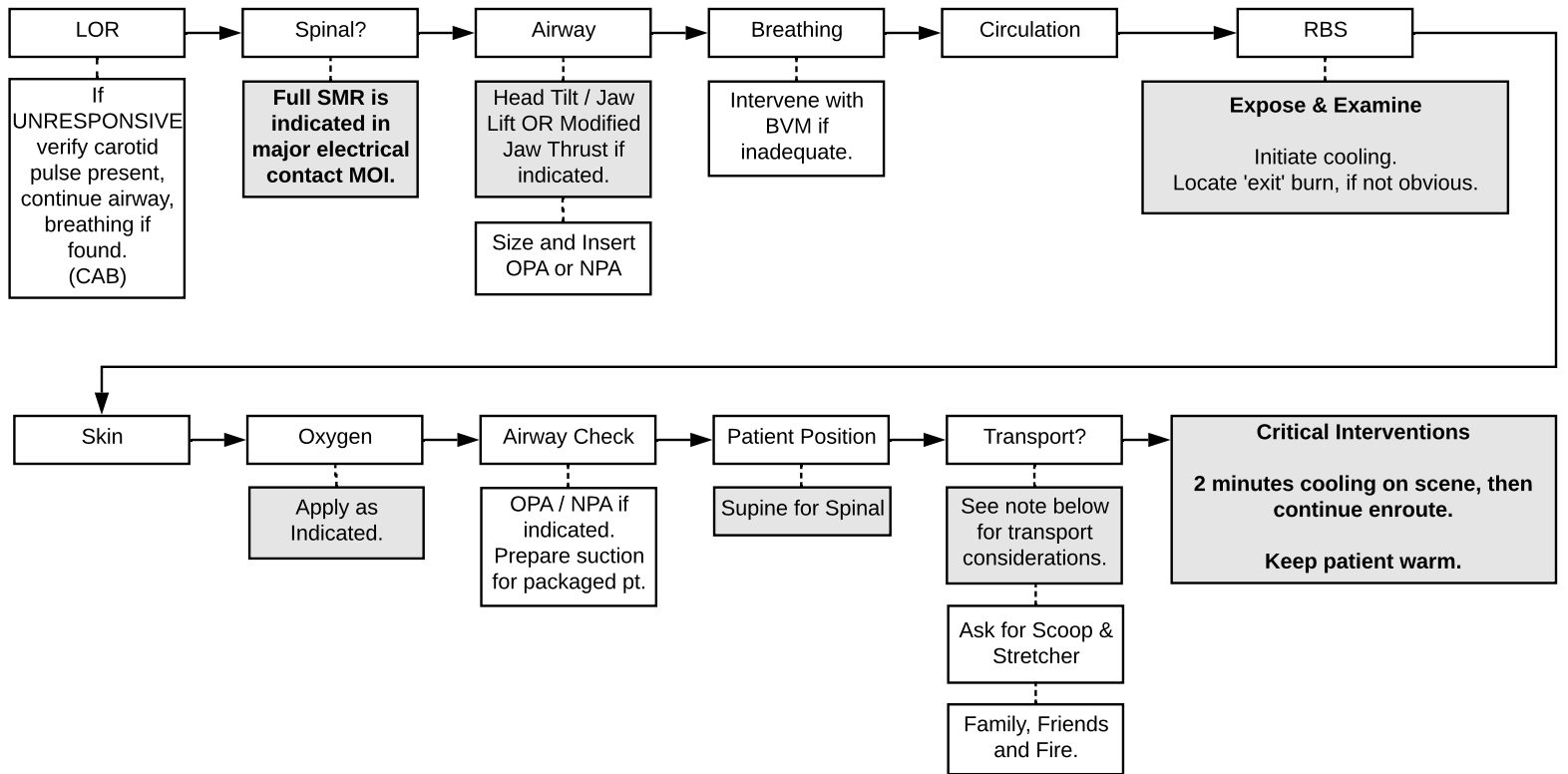


# Major Electrical Contact

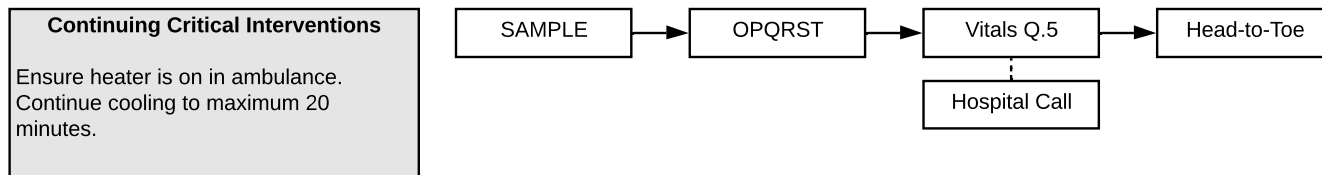
## Scene Survey



## Primary Survey



## Secondary Survey



### NOTES

\* **Transport Considerations:** The following findings suggest a patient who has had an electrical contact is **unstable**, indicating rapid transport:

- \* Altered LOR.
- \* Was in cardiac arrest.
- \* Difficulty maintaining airway.
- \* Respirations require assistance.
- \* Irregular, or absent radial pulse.
- \* Muscle spasms.
- \* Major burns.