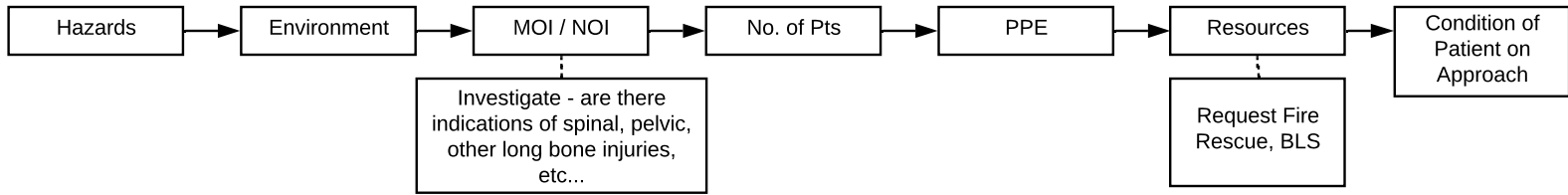
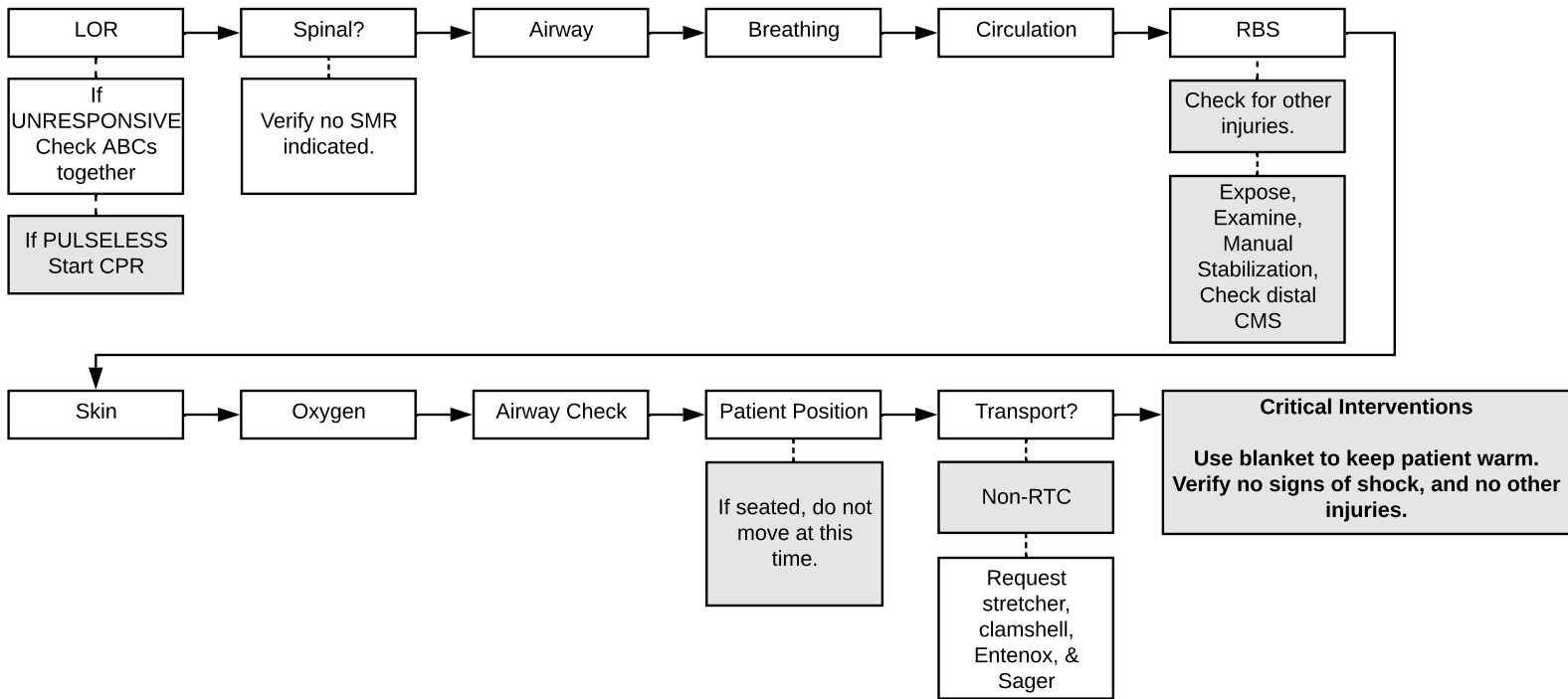


Isolated Femur Fracture

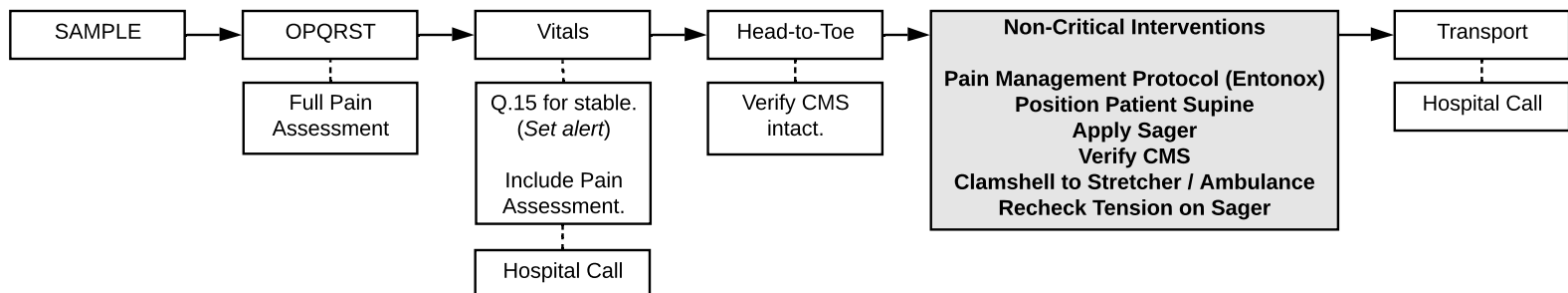
Scene Survey



Primary Survey



Secondary Survey



NOTES

- * Traction Splint used only for MID-THIRD FEMUR fracture, open or closed. Verify in RBS, state when applying Sager Traction Splint.
- * Entenox at END of secondary, BEFORE repositioning or applying traction splint.
- * Traction splint tension at 10% of body weight, to maximum of 15 lbs for CLOSED fracture, maximum of 5 lbs for OPEN fracture.