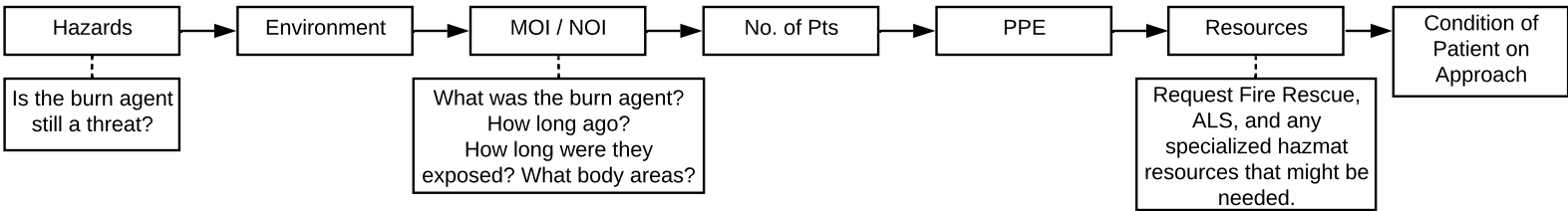
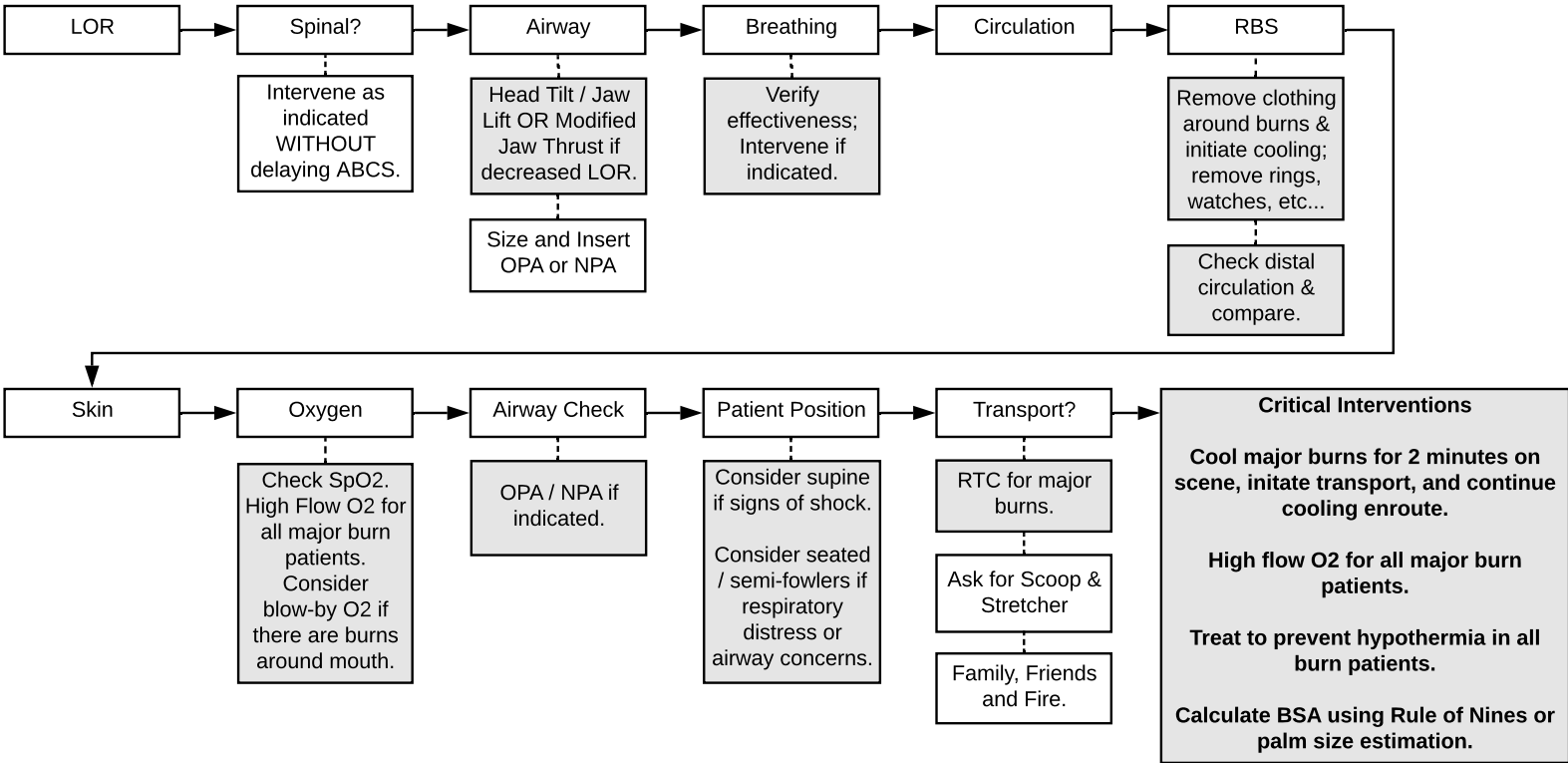


Major Burn Management

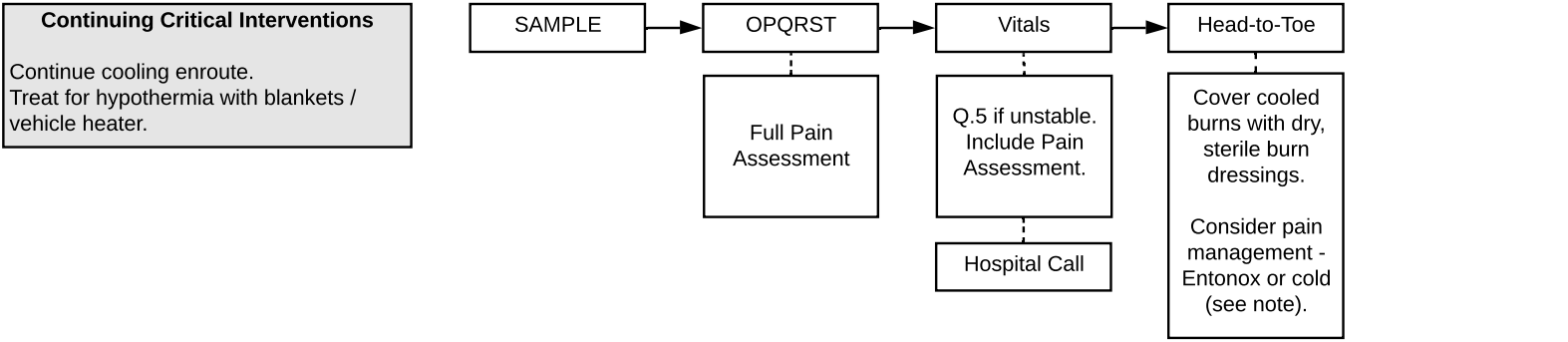
Scene Survey



Primary Survey



Secondary Survey



NOTES

- * Major burn patients are at significant risk for shock. Be alert for signs and symptoms, and treat accordingly.
- * Major burn patients are at significant hypothermia risk, aggravated with cooling. Cool large area burns intermittently, moving around the burn area, and treat aggressively to prevent heat loss.
- * Entonox is indicated for burn patients, unless there is also an inhalation injury (per Entonox contraindications).
- * Applying cold packs for pain control is appropriate, UNLESS there is impairment of distal circulation.
- * Chemical burns must be flushed for 20-30 minutes; be wary of contaminating other body areas, responders, or equipment.
- * Electrical burns are cooled as thermal burns. See Electrical Contact Workflow for full treatment guideline.