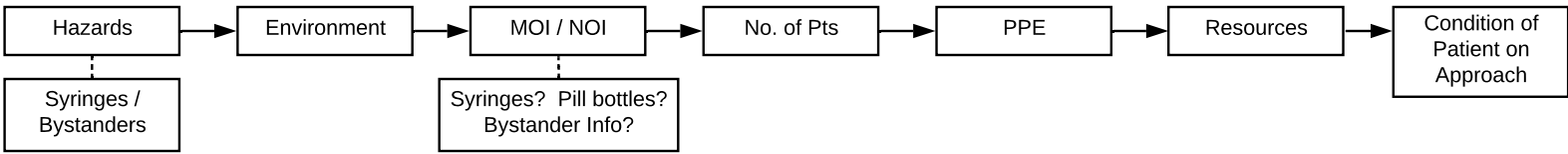
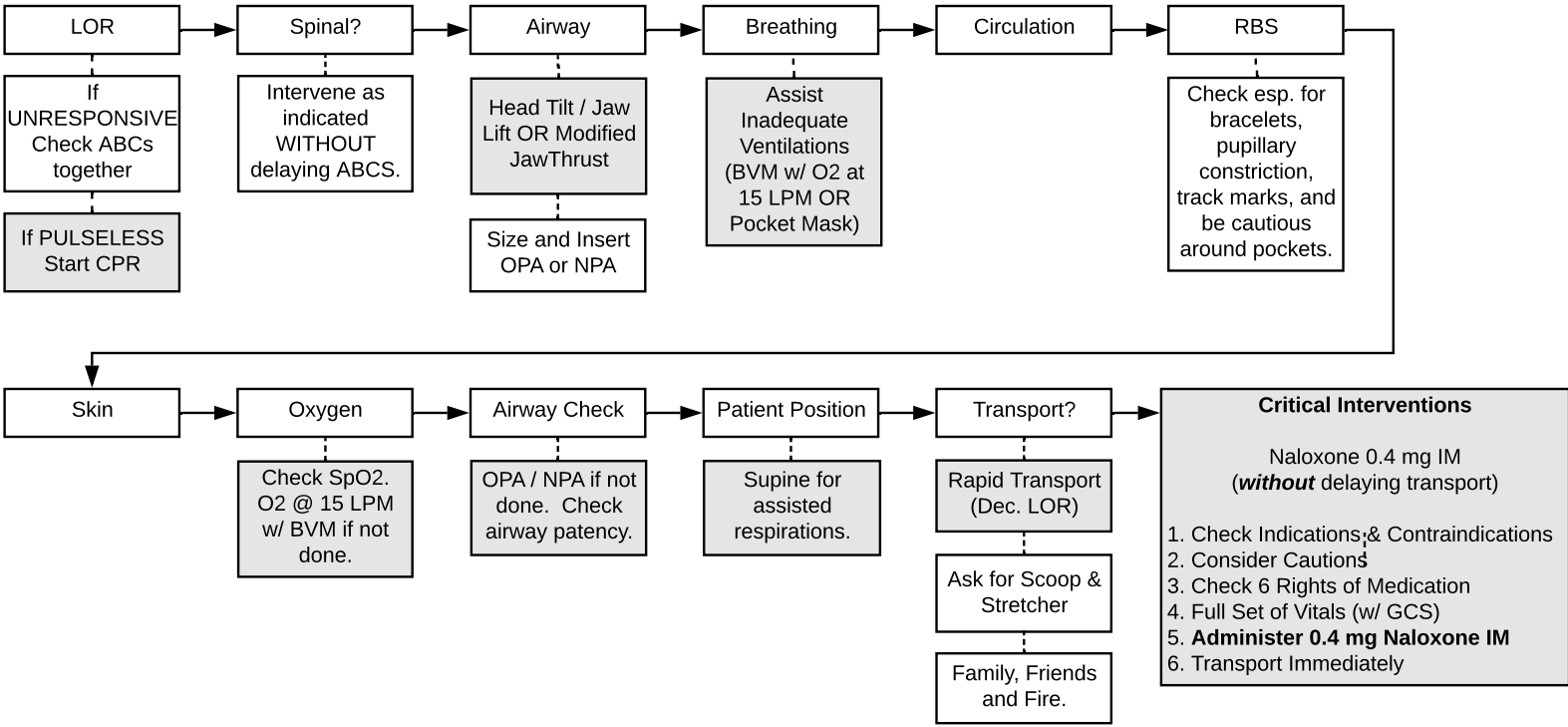


Opioid Overdose Workflow

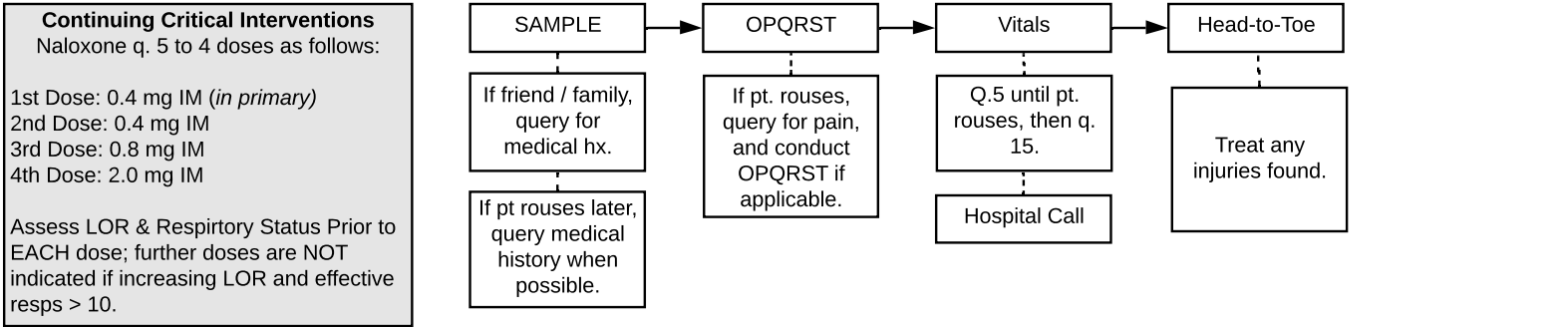
Scene Survey



Primary Survey



Secondary Survey



NOTES

- * PEDIATRIC NALOXONE DOSING GUIDELINES: 0.1 mg / kg to max SINGLE dose of 0.4 mg and max TOTAL dose of 2.0 mg.
- * MAXIMUM DOSING BY INJECTION LOCATION: 5 ml VOLUME anterolateral thigh; 2 ml VOLUME deltoid.
- * Narcan comes in different concentrations - read medication bottles carefully to ensure accurate dosing per guidelines, as well as expiry date.
- * Narcan's half-life is significantly shorter than that of most opioids - at least 1 hour of monitoring post-treatment is required to prevent recurrence.
- * If continued no response to Naloxone, consider CBG check; treat as diabetic if < 4.0.
- * CAUTION: High doses of Naloxone increase risk of withdrawal symptoms, such as nausea, seizures and aggression.